



# TOWEL RAIL THERMOSTATIC ELEMENT HM53RBT02



LED DISPLAY



4 TOUCH BUTTON CONTROL



1-9hr RBT MODES



3 WORKING MODES



KEY LOCK

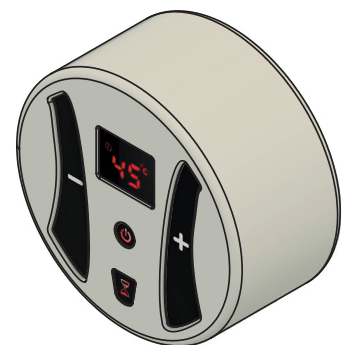
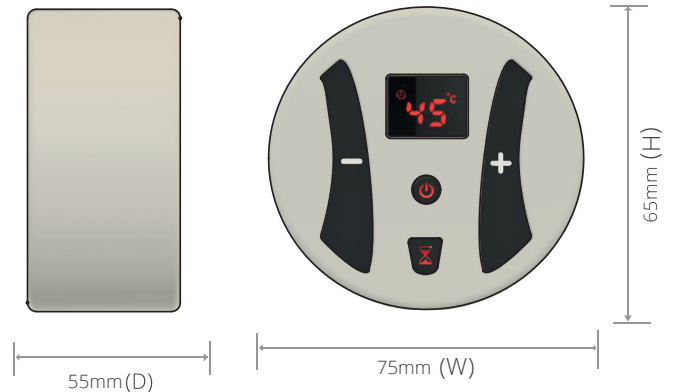
## DESCRIPTION

The HM53RBT02 towel rail heating element can be installed to any of the HM series of towel rails.

The controller is equipped with 3 working modes: Timer, Temperature and Manual. The LED display shows notification of selected mode with an audible sound notification as a standard feature. The soft touch controls are easy to use and require minimal pressure to operate. Child lock mode is also standard with this model.

The digital heating element helps control energy costs in summer by converting a radiator or towel rail, usually controlled by central heating, into an electric device. This allows radiators or towel rails to be used as stand-alone products, providing cost efficiency in terms of electricity use. This digital heating controller is available with a white or chrome exterior, ideal to fit with any style of radiator or bathroom. **This unit comes with a 2 year warranty.**

## DIMENSIONS



## TECHNICAL DATA

MODELS	RATED VOLTAGE	OUTPUT	TEMPERATURE RANGE	INSULATION LEVEL
HM53RBT02	230v-50Hz	100-900W	30~70°C	Class 1

